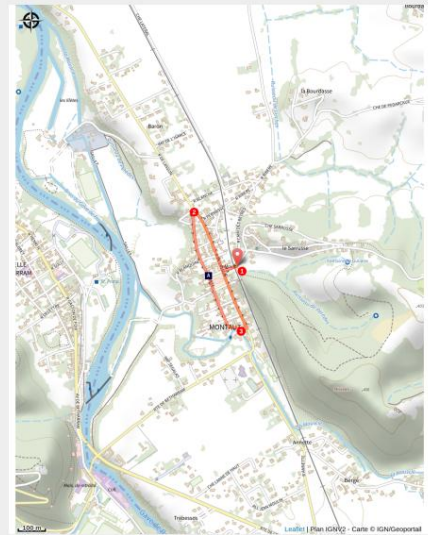


# Montaut Heritage Walk: an agricultural and industrious fortified town



## Montaut Heritage Walk: an agricultural and industrious fortified town

Faced with Bigorre threatening her lands, Viscountess Marguerite de Béarn signed a paréage contract, granting her equal rights and possessions with Arnaud Guilhem, the abbot of St Pé de Bigorre. From this political act, a new town between Béarn and Bigorre was born in 1308, a fortified town called Montaut, which would drive the region's economic and demographic development. The chosen location, sheltered from flooding, was Mons Altus, the high mountain that would become Montaut. Its large forests and limestone-rich subsoil allowed for the construction of lime kilns that would largely supply the buildings of the time and those to come.

### Practical information

Practical: Pedestrian

Duration: 1 hour

Length: 1.2 km

Elevation gain: 1 m

Difficulty: Very easy

Type: Loop

# Itinerary

Departure: Montaut

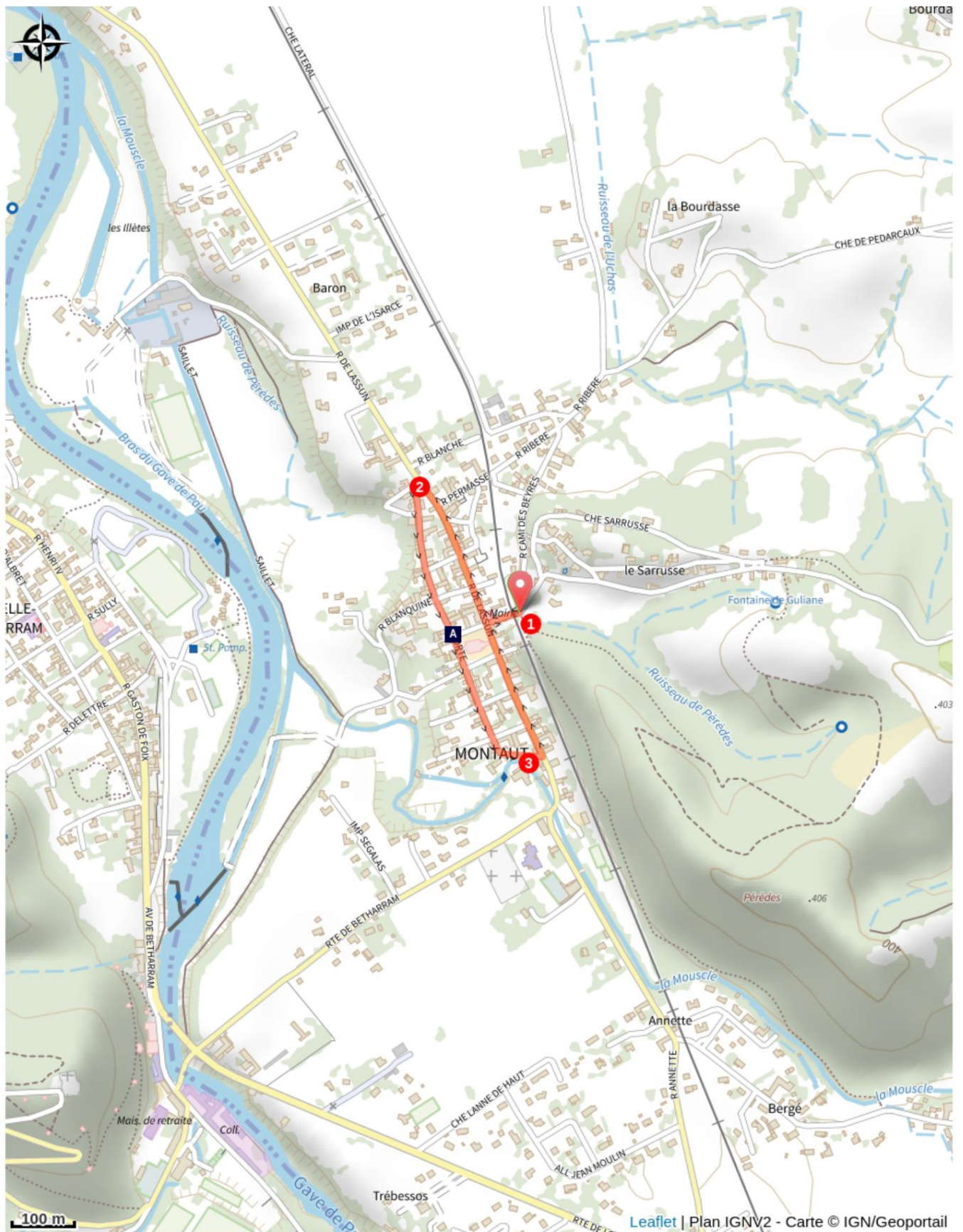
Arrival: Montaut

1. From the church square, go around the church on the left to reach the Place de la Bastide. Watching the church go off to the right, take the first right. Cross the railway line, being careful of any passing trains, and reach the Bruquet fountain.
2. From the fountain, retrace your steps and turn right. You will see the houses with courtyards. Continue straight on Rue de Lassun to reach the factories and the hamlet of Lassun.
3. At a Calvary, turn left and continue straight on to the church. Leave the church on your left and continue straight ahead. Cross Rue du Moulin and continue straight ahead. Take the left turn to reach the lime kilns and the train station.
4. Then, go to the end of the path and turn left. Continue straight until you reach the church square, and you have arrived.

## Additional tourist information:

<https://www.tourisme64.com/itinaire/MONTAUT/ITIAQU064V51Z88U-Balade-patrimoine-Montaut--une-bastide-agricole-et-industrieuse>

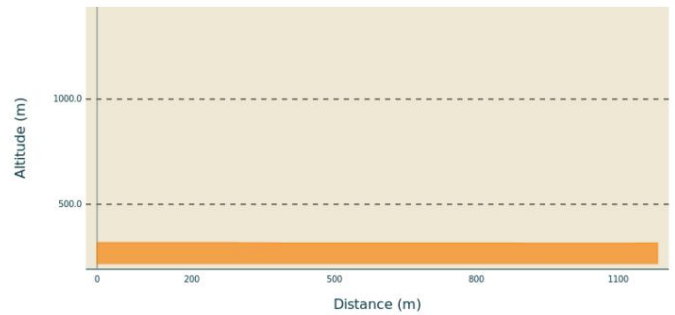
## On your way...



 Bastide of Montaut (A)

# All practical information

## Elevation profile



Min altitude 315 m Max altitude 318 m

## Recommended parking

43.129788,-0.200658

## Source

Community Tourist Office of the Pays de Nay

## Information points

Community Tourist Office of  
Country of Nay

Place du 08 Mai 1945, None NAY 64800

tourisme@paysdenay.fr [http://  
tourisme-bearn-paysdenay.com/  
fr/](http://tourisme-bearn-paysdenay.com/fr/)



## On your way...

---



### Bastide of Montaut (A)

Founded by Margaret of Foix-Béarn in 1308, Montaut is a village in the Pays de Nay region that is showcasing its agricultural fortified past and heritage through ongoing urban development. Fountains, wash houses, traditional Béarnese farms, and flower displays all contribute to a pleasant living environment.

Photo credit: OTCPN